



**REGIONAL SPECIALISED METEOROLOGICAL CENTRE-TROPICAL CYCLONES, NEW DELHI  
TROPICAL WEATHER OUTLOOK**

**DEMS-RSMC TROPICAL CYCLONES NEW DELHI DATED 16.08.2024**

**TROPICAL WEATHER OUTLOOK FOR NORTH INDIAN OCEAN (THE BAY OF BENGAL AND THE ARABIAN SEA) VALID FOR NEXT 168 HOURS ISSUED AT 0600 UTC OF 16.08.2024 BASED ON 0300 UTC OF 16.08.2024.**

**BAY OF BENGAL:**

UNDER THE INFLUENCE OF THE CYCLONIC CIRCULATION OVER SOUTH BANGLADESH & ADJOINING GANGETIC WEST BENGAL, A LOW PRESSURE AREA FORMED OVER NORTHWEST BAY OF BENGAL AND ADJOINING AREAS OF WEST BENGAL & BANGLADESH AT 0000 UTC AND PERSISTED OVER THE SAME REGION AT 0300 UTC OF TODAY, THE 16<sup>TH</sup> AUGUST, 2024. THE ASSOCIATED CYCLONIC CIRCULATION EXTENDED UPTO 4.5 KM ABOVE MEAN SEA LEVEL TILTING SOUTHWESTWARDS WITH HEIGHT.

IT IS LIKELY TO MOVE NORTH-NORTHWESTWARDS DURING NEXT 2 DAYS AND LAY AS A WELL-MARKED LOW PRESSURE AREA OVER BANGLADESH AND ADJOINING GANGETIC WEST BENGAL. THEREAFTER, IT IS LIKELY TO MOVE WEST-NORTHWESTWARDS, ACROSS GANGETIC WEST BENGAL, JHARKHAND AND ADJOINING AREAS DURING SUBSEQUENT 3 DAYS.

SCATTERED LOW AND MEDIUM CLOUDS WITH EMBEDDED INTENSE TO VERY INTENSE CONVECTION LAY OVER NORTH BAY OF BENGAL, ARAKAN COAST, NORTH ANDAMAN SEA AND GULF OF MARTABAN. SCATTERED LOW AND MEDIUM CLOUDS WITH EMBEDDED MODERATE TO INTENSE CONVECTION LAY OVER CENTRAL BAY OF BENGAL AND ISOLATED WEAK TO MODERATE CONVECTION LAY OVER SOUTH BAY OF BENGAL AND SOUTH ANDAMAN SEA.

**\*PROBABILITY OF CYCLOGENESIS (FORMATION OF DEPRESSION) DURING NEXT 168 HRS:**

24 HOURS	24-48 HOURS	48-72 HOURS	72-96 HOURS	96-120 HOURS	120-144 HOURS	144-168 HOURS
NIL	NIL	NIL	NIL	NIL	NIL	NIL

**\*NOTE: EVERY 24HR FORECAST IS VALID UPTO 0300 UTC (0830 IST) OF NEXT DAY**

**ARABIAN SEA:**

YESTERDAY'S CYCLONIC CIRCULATION OVER SOUTHEAST ARABIAN SEA & ADJOINING SOUTH KERALA COAST LAY OVER SOUTH INTERIOR KARNATAKA & NEIGHBOURHOOD AND EXTENDED UPTO 5.8 KM ABOVE MEAN SEA LEVEL TILTING SOUTHWESTWARDS WITH HEIGHT.

SCATTERED LOW AND MEDIUM CLOUDS WITH EMBEDDED INTENSE TO VERY INTENSE CONVECTION LAY OVER SOUTHEAST ARABIAN SEA, MALDIVES AREA AND SOUTH PARTS OF COMORIN AREA. SCATTERED LOW AND MEDIUM CLOUDS WITH EMBEDDED MODERATE TO INTENSE CONVECTION LAY OVER EASTCENTRAL ARABIAN SEA, LAKSHADWEEP ISLAND AREA AND ISOLATED WEAT TO MODERATE CONVECTION LAY OVER REST ARABIAN SEA, GULF OF KUTCH AND GULF OF CAMBAY.

**\*PROBABILITY OF CYCLOGENESIS (FORMATION OF DEPRESSION) DURING NEXT 168 HRS:**

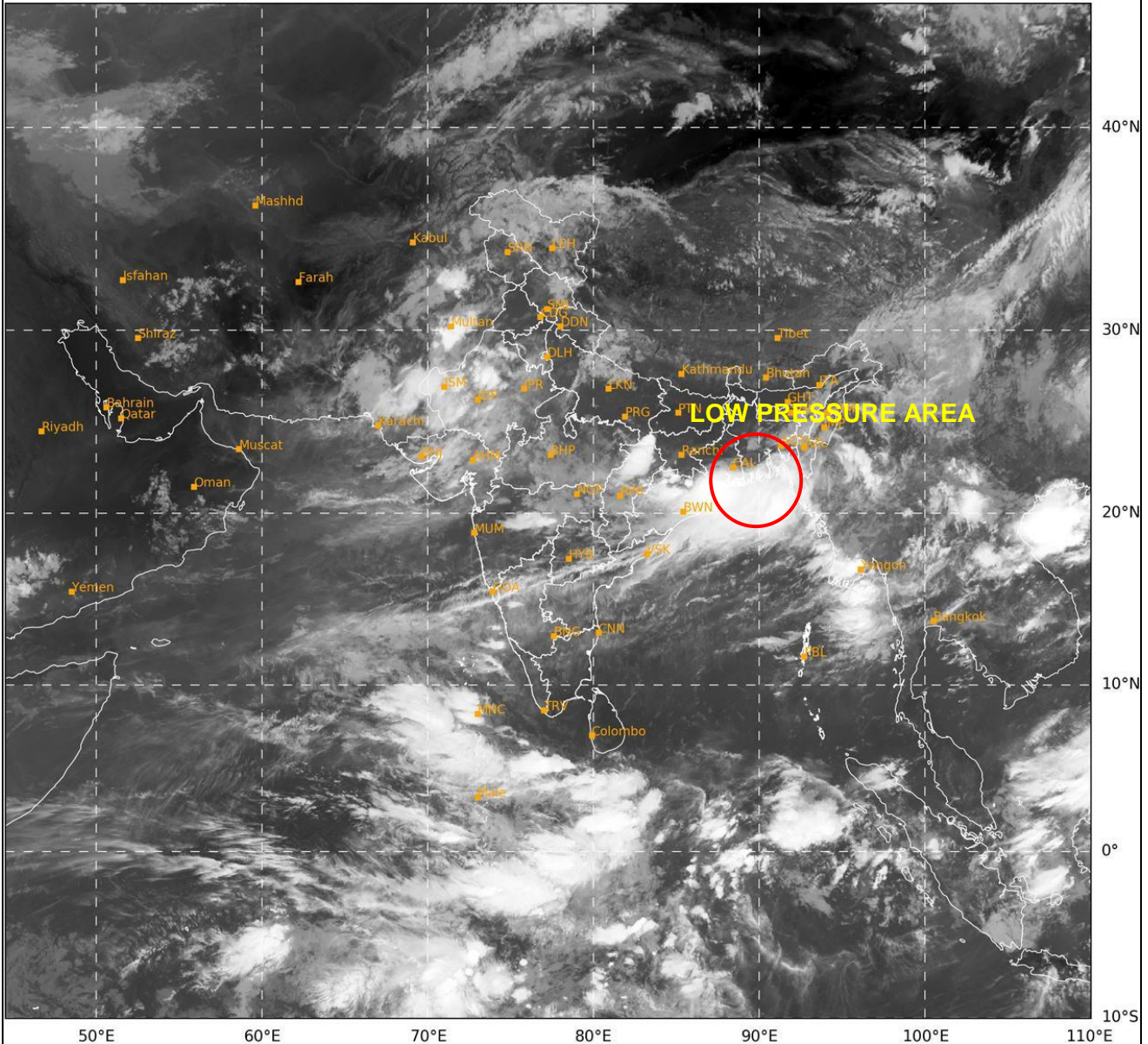
24 HOURS	24-48 HOURS	48-72 HOURS	72-96 HOURS	96-120 HOURS	120-144 HOURS	144-168 HOURS
NIL	NIL	NIL	NIL	NIL	NIL	NIL

\*NOTE: EVERY 24HR FORECAST IS VALID UPTO 0300 UTC (0830 IST) OF NEXT DAY

**REMARKS:** NIL

SAT : INSAT-3DR IMG  
IMG\_TIR1 10.8 um  
LIC Mercator

16-08-2024/(0315 to 0342) GMT  
16-08-2024/(0845 to 0912) IST



386

938

IMD, DELHI

Cloud distribution: (a) Isolated: <25%, Scattered:25-50%, Broken: 51-75%, Solid:>75%, Convection Intensity: (a) Weak: Cloud Top Temperature (CTT) >-25°C, (b) Moderate: CTT: - 25°C to -40°C, (c) Intense: CTT: - 41°C to -70°C and (d) Very Intense: : Less than -70°C  
PROBABILITY OF CYCLOGENESIS (FORMATION OF DEPRESSION):NIL: 0%, LOW: 1-33%, , MODERATE: 34-66% AND HIGH: 67-100%  
This is a guidance Bulletin for WMO/ESCAP Panel Member countries. Visit respective National websites for Country specific Bulletins